

# Bicycle Advisory Committee

---

Infrastructure Subcommittee

February 22, 2023



PLANNING &  
DEVELOPMENT  
DEPARTMENT

# Mission and Vision

## **BAC Mission**

To advise and make recommendations to the commission and the director on issues related to bicycling in the city including, but not limited to, amendments to the Bike Plan, bicycle safety and education, implementation of the Bike Plan, development of strategies for funding projects related to bicycling, and promoting public participation in bicycling.

## **BAC Vision**

By 2027, the City of Houston will be a Safer, More Accessible, Gold Level Bike-Friendly City

# Infrastructure Subcommittee Roll Call

Tom Compson, Chair BAC

Alejandro Perez, Vice Chair, Infra SC Chair

Leah Chambers

Beth Martin

Jessica Wiggins

Yuhayna Mahmud

Judith Villarreal

Amar Mohite

Mike VanDusen

Ana Ramirez Huerta

Robin Holzer

Ian Hlavacek

David Fields

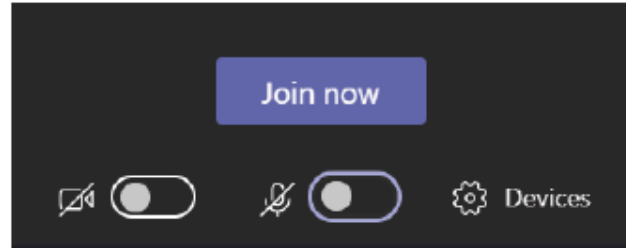
Juvenal Robles

# Microsoft Teams Meeting Instructions

**Agenda and Slides:** <https://houstonbikeplan.org/bac/>

**Join By Phone:** 936-755-1521; ID 114 253 400#

# Microsoft Teams Meeting Instructions



Please Remember to Stay on **Mute**, unless Identified by the Chair to speak

If you are connecting through the phone, please mute/unmute by pressing **\*6**



# Agenda

1. Director's Report
2. Chair's Report
3. Public Comment
4. Presentation: West Loop Shared-Use Path & Bayou Bridge
5. Presentation: Desire Paths
6. Open Forum
7. Announcements/Events

**The public is invited to speak for up to two (2) minutes each at the beginning of the meeting.**

# Director's Report

David Fields  
Chief Transportation Planner,  
Planning & Development Department

# Chair's Report

Alejandro Perez  
Co-Chair, Infrastructure Subcommittee  
Vice Chair BAC

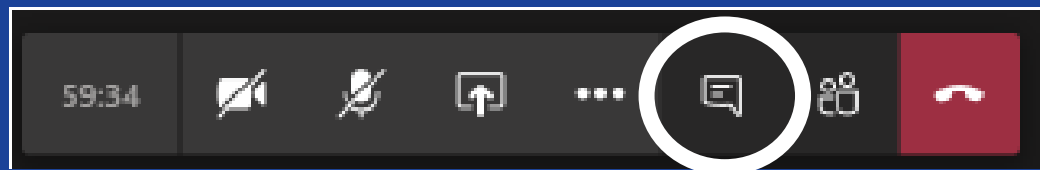


# Public Comment

Send **written comments** to [bac@houstontx.gov](mailto:bac@houstontx.gov) by 5:00pm the day before a BAC meeting. Comments will be read aloud by staff during the meeting.

Comment by **Phone**: to join dial 936-755-1521; ID 114 253 400# Press \*6 to unmute when called upon by the Chair

Comment via **Microsoft Teams**: Type your name and that you would like to comment



# West Loop Shared-Use Path & Bayou Bridge

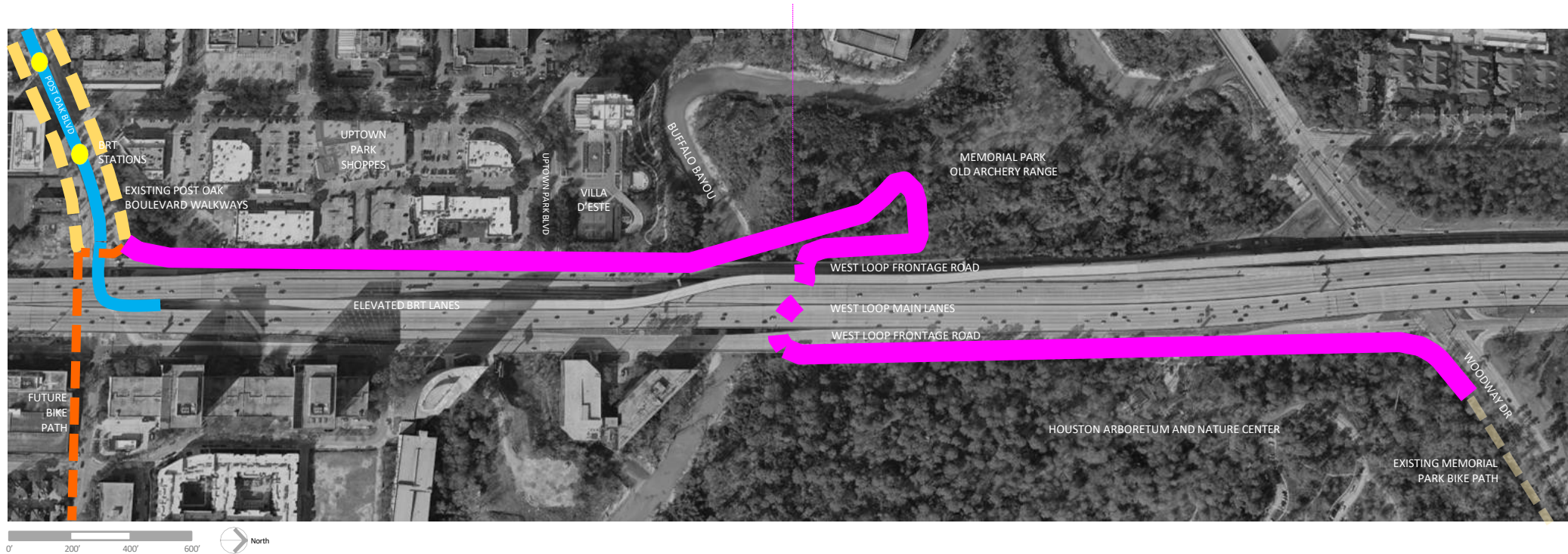
Clark Martinson  
Uptown Houston District

# WEST LOOP SHARED-USE TRAIL & BAYOU BRIDGE



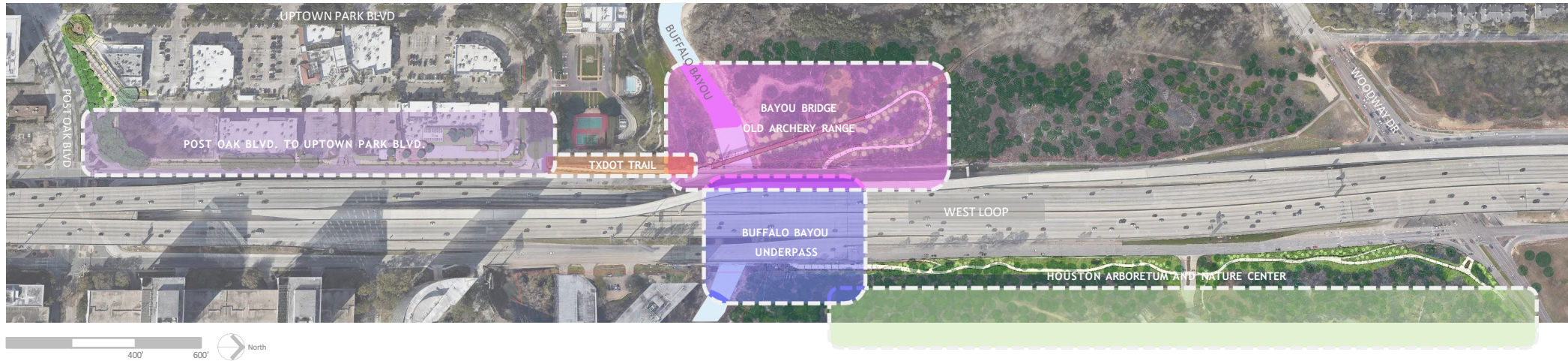
10 JANUARY 2023

# WEST LOOP SHARED-USE TRAIL & BAYOU BRIDGE



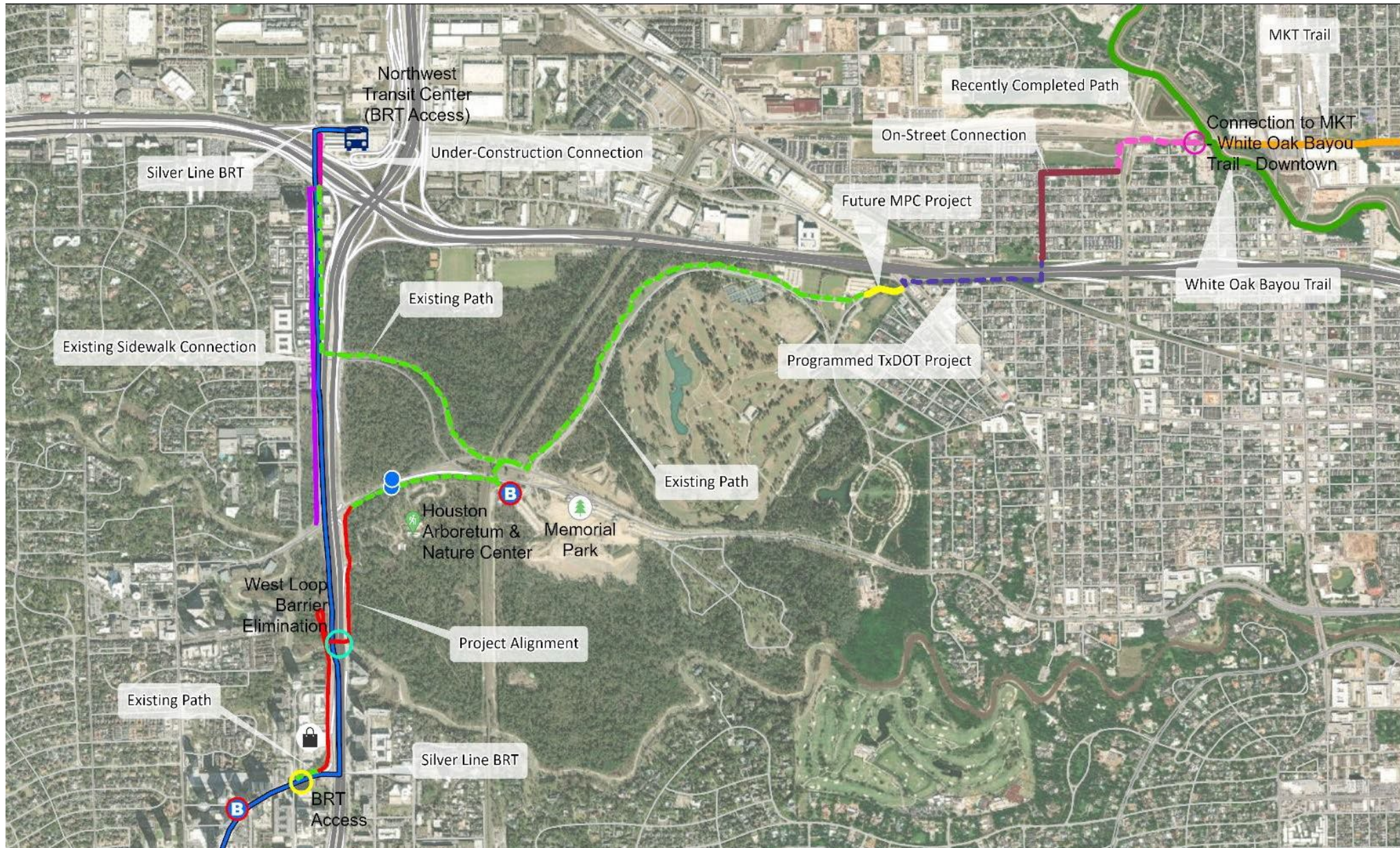
- 1.1 MILE (5856') SHARED USE BIKE PATH IN 14' CLEAR ZONES
- 350' BUFFALO BAYOU SUSPENSION BRIDGE + 156' TRUSS BRIDGE
- MEMORIAL PARK SOUTH ENTRANCE
- WEST LOOP BRIDGE UNDERPASS

# CONNECTS UPTOWN HOUSTON TO MEMORIAL PARK



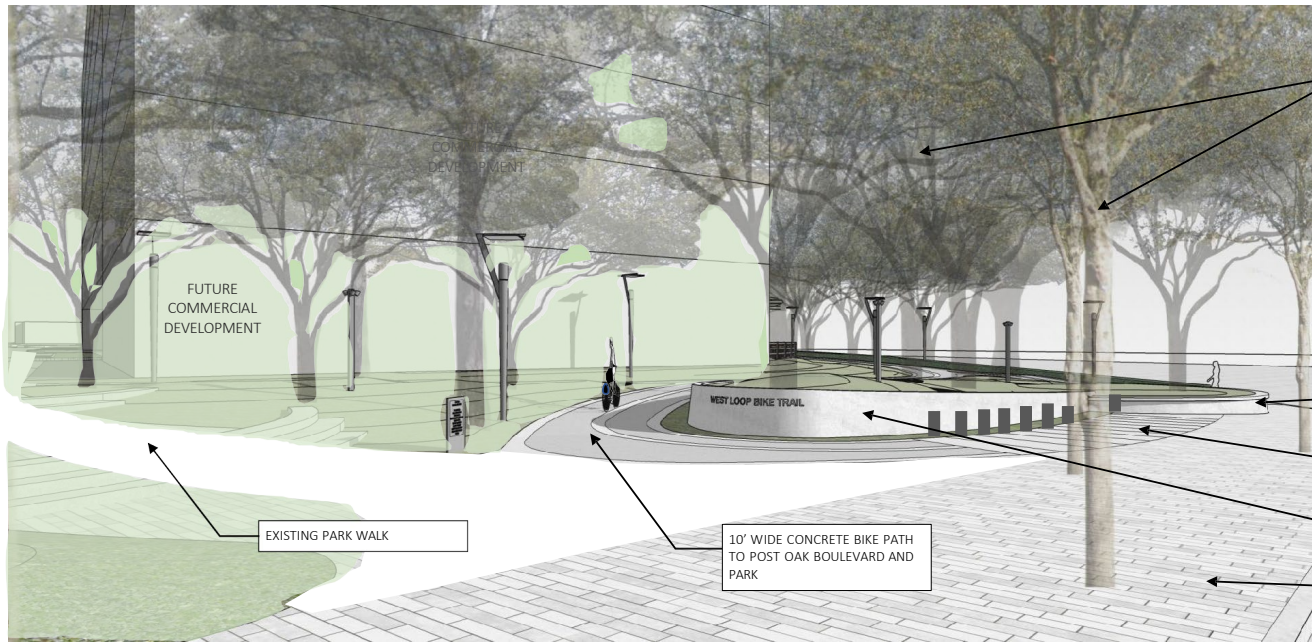
- CONNECTS TO POST OAK BOULEVARD WALKWAYS AND BRT
- CONNECTS TO HOUSTON ARBORETUM AND NATURE CENTER WEST LOOP ENTRANCE
- CONNECTS TO EXISTING MEMORIAL PARK BIKE PATH ALONG WOODWAY
- CONNECTS TO NORTH POST OAK LANE TRAILS AND NORTHWEST TRANSIT CENTER

# CONNECTS UPTOWN HOUSTON TO WHITE OAK BAYOU TRAIL



# POST OAK BLVD. TO UPTOWN PARK BLVD.





PRESERVED EXISTING LIVE OAKS

FUTURE COMMERCIAL DEVELOPMENT

EXISTING PARK WALK

10' WIDE CONCRETE BIKE PATH TO POST OAK BOULEVARD AND PARK

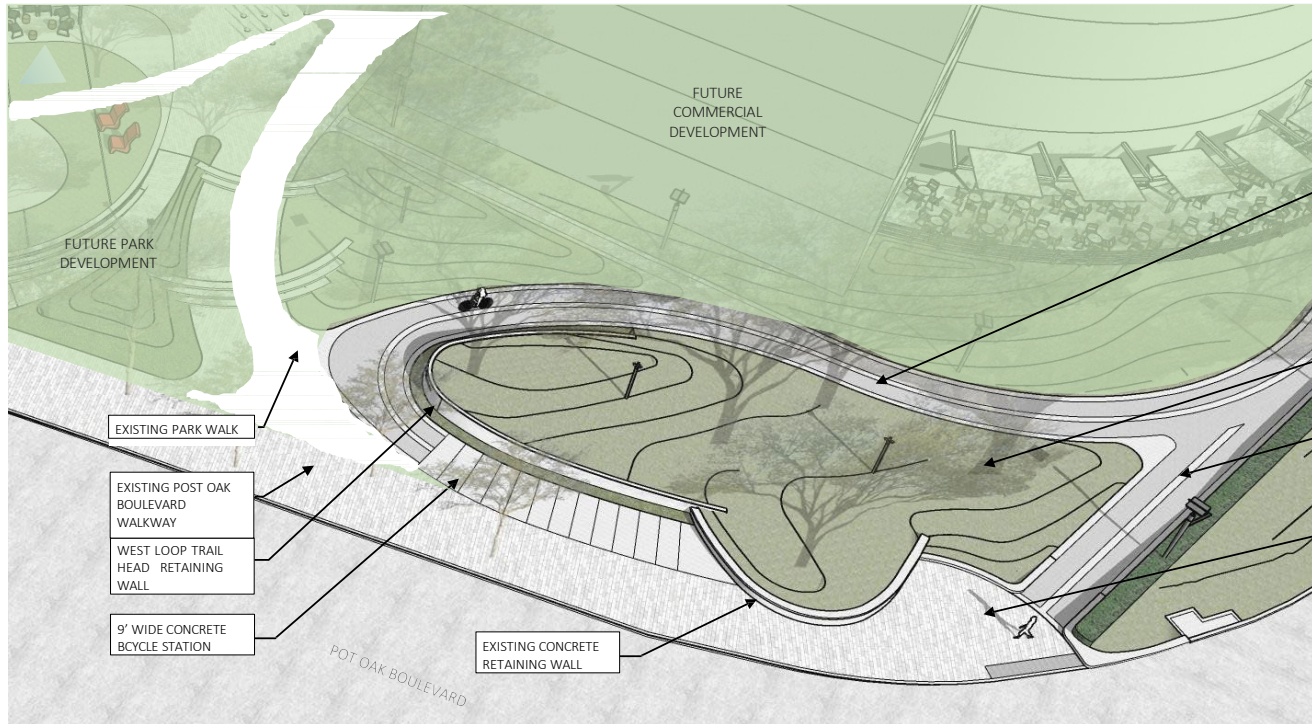
WEST LOOP BIKE TRAIL

EXISTING CONCRETE RETAINING WALL

9' WIDE CIP CONCRETE BICYCLE STATION PAVING

WEST LOOP TRAIL HEAD RETAINING WALL

EXISTING POST OAK BOULEVARD WALKWAY



PROP. 10' WIDE CIP CONCRETE WEST LOOP TRAIL

FUTURE PARK DEVELOPMENT

FUTURE COMMERCIAL DEVELOPMENT

EXISTING PARK WALK

EXISTING POST OAK BOULEVARD WALKWAY

WEST LOOP TRAIL HEAD RETAINING WALL

9' WIDE CONCRETE BICYCLE STATION

POT OAK BOULEVARD

EXISTING CONCRETE RETAINING WALL

PRESERVED EXISTING LIVE OAKS

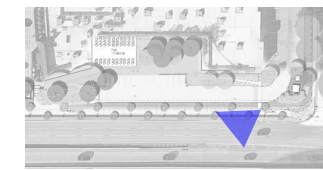
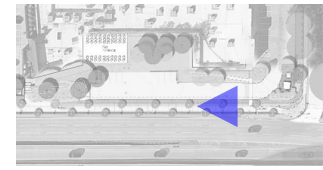
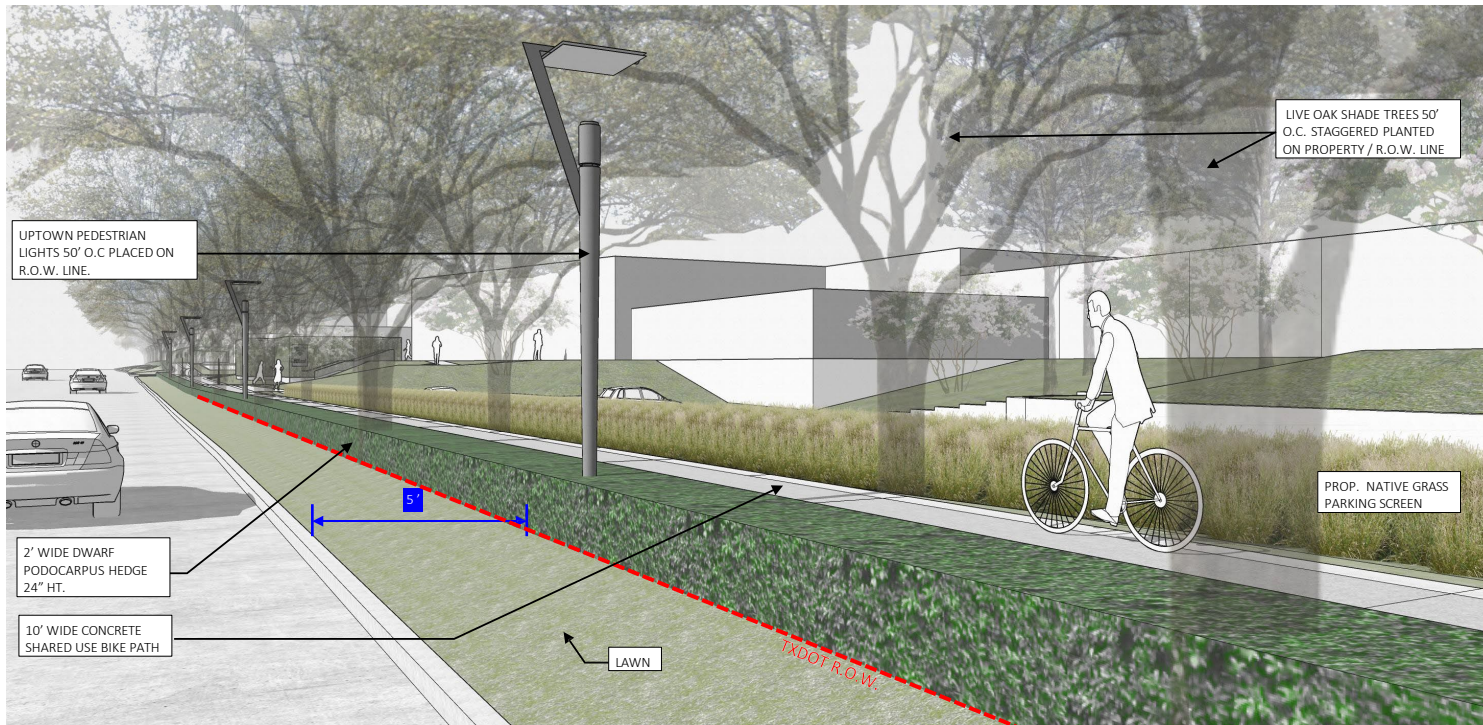
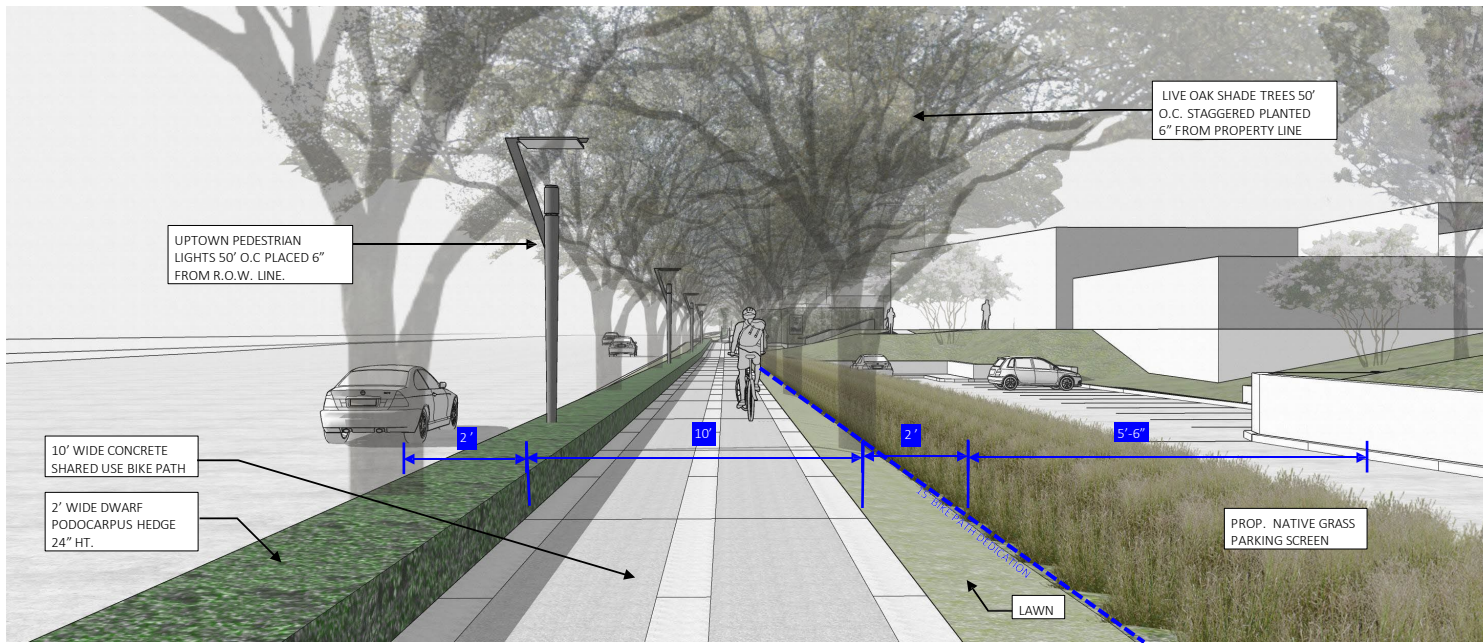
10' SLOPING CONCRETE WALK TO CORNER PLAZA

EXISTING BOULEVARD CORNER PLAZA



West Loop Trail at Post Oak Boulevard





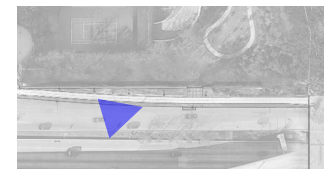


- EXISTING CONCRETE SOUND WALL TO REMAIN.
- SERVICE ACCESS GATES TO REMAIN
- UPTOWN PEDESTRIAN LIGHTS 50' O.C.
- EXISTING TREES AND PLANTING TO REMAIN.
- LAYDOWN CONCRETE CURB AT REINFORCED LAWN SERVICE DRIVE
- REMOVE EXISTING CONCRETE DRIVEWAY AND REPLACE WITH REINFORCED LAWN
- CONVERT "C" EXISTING INLET TO FLUSH INLET
- 10' WIDE CONCRETE SHARED USE BIKE TRAIL

AFTER



BEFORE



VILLA D'ESTE FRONTAGE

# THE BAYOU BRIDGE & OLD ARCHERY RANGE



Memorial Park Connector - The Bayou Bridge  
Houston, Texas





- 1 SUSPENSION BRIDGE BACK SPANS WITH IPE DECKING, 14' CLEAR WIDTH, WEATHERING STEEL
- 2 SUSPENSION BRIDGE TOWER WITH GFRP CLADDING
- 3 CONCRETE ENTRY PLAZA WALLS WITH GFRP CLADDING
- 4 CONCRETE APPROACH WALK TO BRIDGE SLOPING AT 4.9%
- 5 BOLLARD TO CONTROL BRIDGE VEHICULAR ACCESS

Memorial Park Connector - The Bayou Bridge  
Houston, Texas

240' LONG - 14' CLEAR WIDTH SUSPENSION  
BRIDGE WITH 24" CAMBER

SOUTH SUSPENSION BRIDGE TOWERS WITH  
GFRG CLADDING ABOVE THE FLOWWAY  
ELEVATION, CONCRETE BELOW

EXISTING WEST LOOP BRIDGE METAL GUARDRAIL,  
ABOVE THE EXISTING CONCRETE BASE WALL,  
RENOVATED TO MEET BIKEWAY AND CODE  
STANDARDS.

EXISTING WEST LOOP BRIDGE TRAFFIC BARRIER TO  
REMAIN, METAL RAIL PAINTED TO MATCH  
RENOVATED WEST LOOP PEDESTRIAN BRIDGE  
RAILING

BEFORE



AFTER

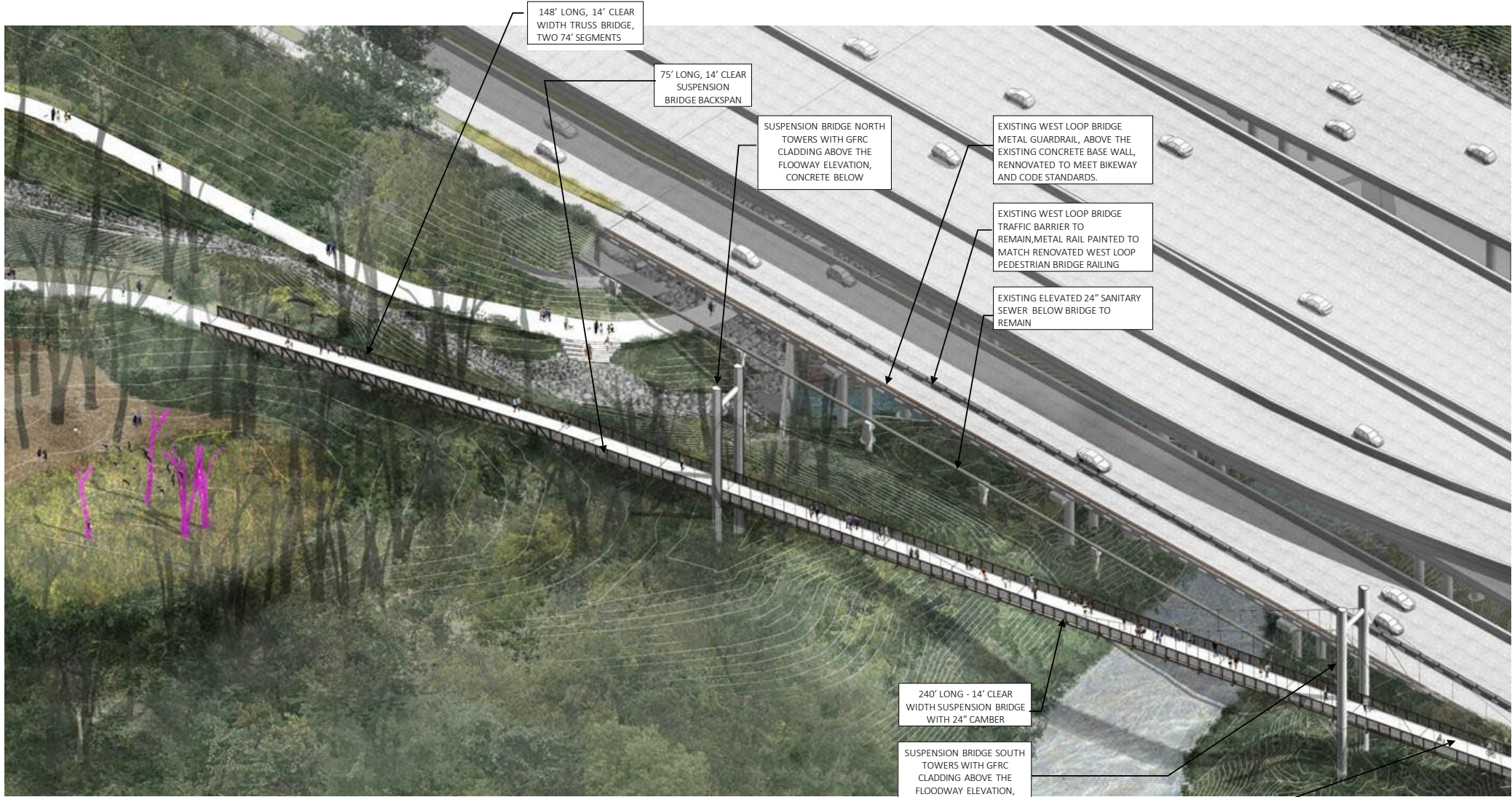
Memorial Park Connector - The Bayou Bridge  
Houston, Texas

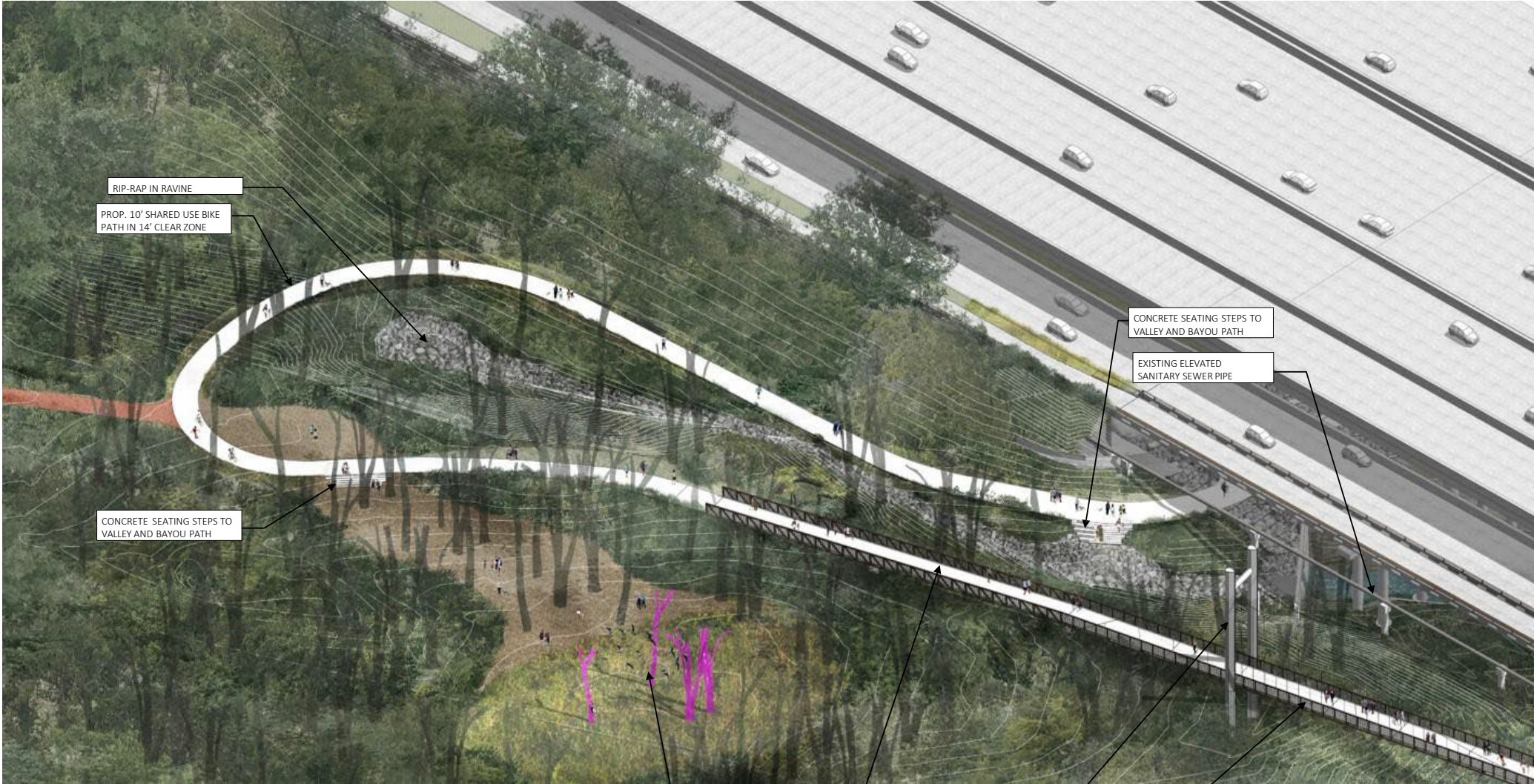
The Bayou Bridge





Memorial Park Connector - [The Bayou Bridge](#)  
Houston, Texas





RIP-RAP IN RAVINE

PROP. 10' SHARED USE BIKE PATH IN 14' CLEAR ZONE

CONCRETE SEATING STEPS TO VALLEY AND BAYOU PATH

CONCRETE SEATING STEPS TO VALLEY AND BAYOU PATH

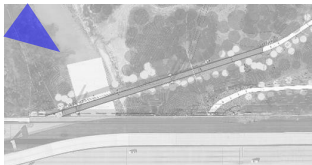
EXISTING ELEVATED SANITARY SEWER PIPE

PROP. 14' CLEAR WIDTH TRUSS BRIDGE

PERCH TREES IN RIPARIAN GRASS MEADOW

SUSPENSION BRIDGE NORTH TOWER

14' CLEAR WIDTH 240' LONG SUSPENSION BRIDGE

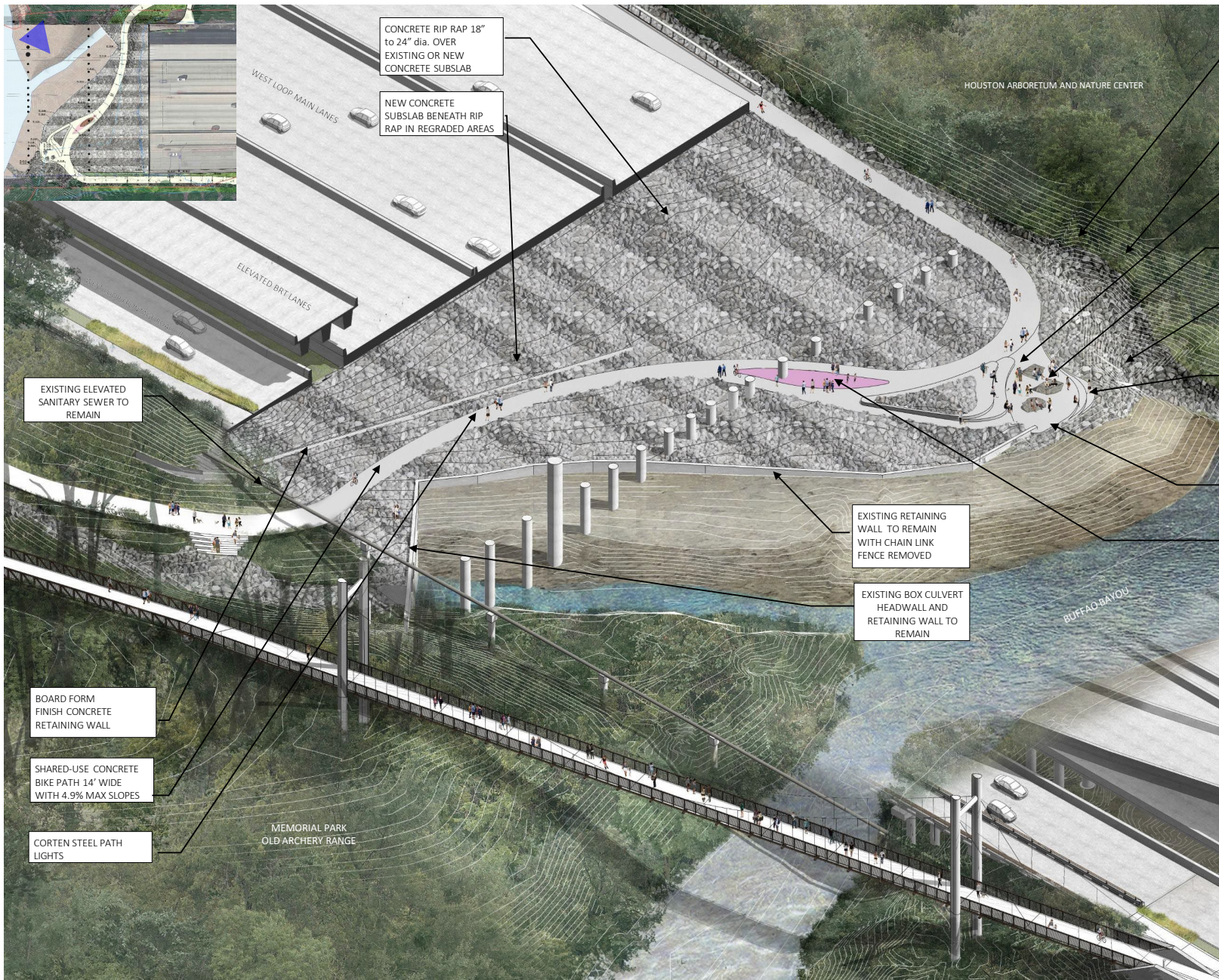


Memorial Park Connector - The Bayou Bridge  
Houston, Texas

The Bayou Bridge & Old Archery Range







CONCRETE RIP RAP 18" to 24" dia. OVER EXISTING OR NEW CONCRETE SUBSLAB

NEW CONCRETE SUBSLAB BENEATH RIP RAP IN REGRADED AREAS

HOUSTON ARBORETUM AND NATURE CENTER

REMOVE UNDERMINED STORM SEWER PIPE AND BAYOU CONCRETE OUTFALL

REMOVE ABOVE GRADE ABANDONED 24" SANITARY SEWER PIPE TO BELOW GRADE

BAYOU OVERLOOK CONCRETE PAVING AND TERRACED SEAT STEPS

SEATING BOULDERS

2:1 SLOPE TO EXISTING LOW POINT 15.00 WITH RIP RAP ON SLOPE, IN SWALE, TO BAYOU

CONCRETE TERRACED SEAT STEPS

REMOVE UNDERMINED RETAINING WALL AND CHAIN LINK FENCE

BIKE PATH MEDIAN AT COLUMN

EXISTING ELEVATED SANITARY SEWER TO REMAIN

EXISTING RETAINING WALL TO REMAIN WITH CHAIN LINK FENCE REMOVED

EXISTING BOX CULVERT HEADWALL AND RETAINING WALL TO REMAIN

BUFFALO BAYOU

BOARD FORM FINISH CONCRETE RETAINING WALL

SHARED-USE CONCRETE BIKE PATH 14' WIDE WITH 4.9% MAX SLOPES

CORTEN STEEL PATH LIGHTS

MEMORIAL PARK OLD ARCHERY RANGE

ELEVATED BRT LANES

WEST LOOP MAIN LANES



AFTER

BOARD FORM  
FINISH CONCRETE  
RETAINING WALL

CONCRETE RIP RAP 18"  
to 24" dia. OVER  
EXISTING OR NEW  
CONCRETE SUBSLAB

EXISTING RETAINING  
WALL TO REMAIN  
WITH CHAIN LINK  
FENCE REMOVED

CORTEN STEEL PATH  
LIGHTS

SHARED-USE CONCRETE  
BIKE PATH 14" WIDE  
WITH 4.9% MAX SLOPES

EXISTING ELEVATED  
SANITARY SEWER TO  
REMAIN



BEFORE

Memorial Park Connector - The Bayou Bridge  
Houston, Texas

Buffalo Bayou Underpass





AFTER

- 2:1 SLOPE TO EXISTING LOW POINT 15.00 WITH RIP RAP ON SLOPE, IN SWALE, TO BAYOU
- CONCRETE TERRACED SEAT STEPS
- BAYOU OVERLOOK CONCRETE PAVING AND TERRACED SEAT STEPS
- SEATING BOULDERS
- CORTEN STEEL PATH LIGHTS
- SHARED-USE CONCRETE BIKE PATH 14' WIDE WITH 4.9% MAX SLOPES
- CONCRETE RIP RAP 18" to 24" dia. OVER EXISTING OR NEW CONCRETE SUBSLAB

REMOVE UNDERMINED RETAINING WALL AND CHAIN LINK FENCE

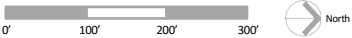


BEFORE



Buffalo Bayou Underpass

# HOUSTON ARBORETUM AND NATURE CENTER

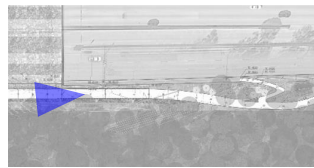


Memorial Park Connector - The Bayou Bridge  
Houston, Texas



BEFORE

AFTER

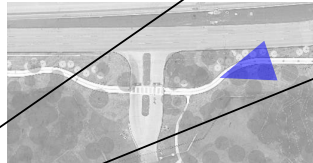


Memorial Park Connector - The Bayou Bridge  
Houston, Texas

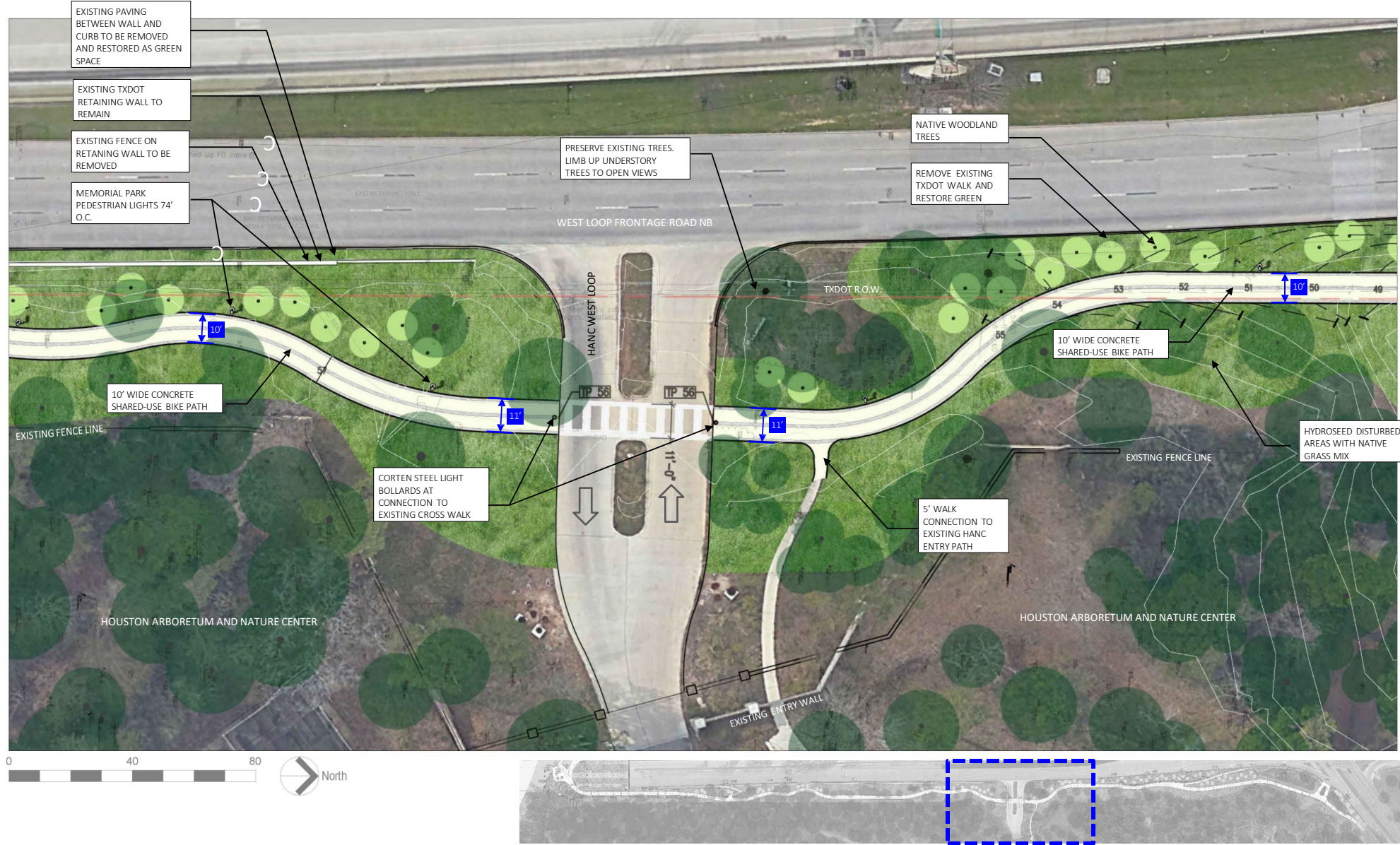


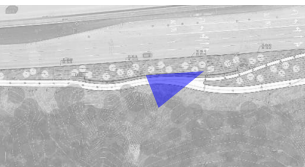
AFTER

- EXISTING HANC ENTRANCE WALL
- 5' CONCRETE WALK TO HANC ENTRANCE
- 10' WIDE CONCRETE SHARED-USE BIKE PATH IN 14' CLEAR ZONE
- PROP. MEMORIAL PARK PEDESTRIAN LIGHTS 74' O.C.
- PRESERVE EXISTING TREES. LIMB UP UNDERSTORY TREES TO OPEN VIEWS.
- PROP. HYDROSEED DISTURBED AREAS WITH NATIVE GRASS MIX



BEFORE









# EXISTING FREE FLOW RIGHT TURN ONTO WOODWAY DR.



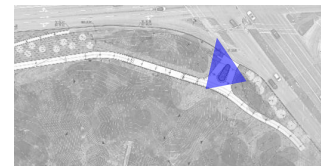
OPTION: REMOVE FREE FLOW RIGHT TURN LANE AND  
CREATE DEDICATED RIGHT TURN ONTO WOODWAY DR.



AFTER

- 10' WIDE CONCRETE SHARED-USE BIKE PATH IN 14' CLEAR ZONE
- MEMORIAL PARK PEDESTRIAN LIGHTS 74' O.C.
- PRESERVE EXISTING TREES. LIMB UP UNDERSTORY TREES TO OPEN VIEWS INTO HANC
- SLOPING CONCRETE WALK TO SHARED-USE BIKE PATH
- HYDROSEED DISTURBED AREAS WITH NATIVE GRASS MIX.
- 54" TEAR DROP GUARDRAIL ABOVE BOARD FORM FIN. CONCRETE RETAINING WALL

- NATIVE WOODLAND TREES AND LANDFORM WITH HYDROSEEDED NATIVE GRASSES
- BOARD FORM FIN. CONCRETE ENTRY MEMORIAL PARK ENTRY WALL
- PRE-CAST CONCRETE BANCO AT HANC VISTA MOMENT
- ACCESSIBLE CURB AND DETECTABLE WARNING PAVERS AT CROSSWALK

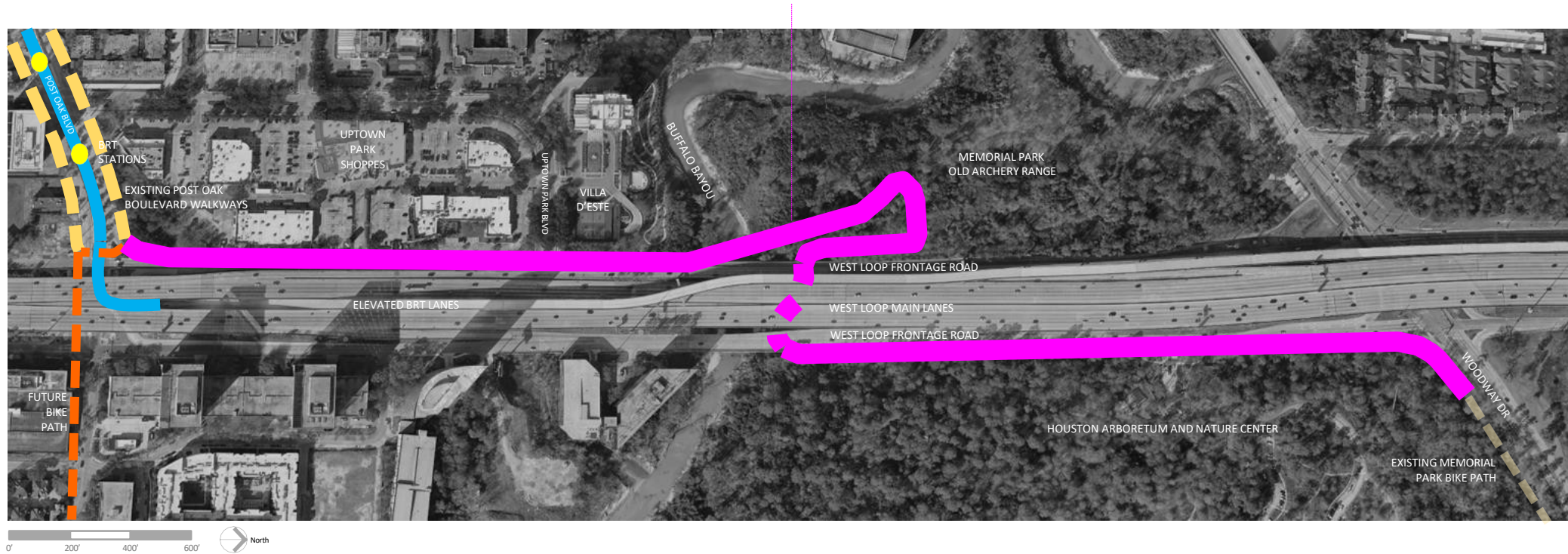


BEFORE



Memorial Park Connector - The Bayou Bridge  
Houston, Texas

# WEST LOOP SHARED-USE TRAIL & BAYOU BRIDGE



- CONNECTS TO POST OAK BOULEVARD WALKWAYS AND BRT
- CONNECTS TO HOUSTON ARBORETUM AND NATURE CENTER WEST LOOP ENTRANCE
- CONNECTS TO EXISTING MEMORIAL PARK BIKE PATH ALONG WOODWAY

## NEXT STEPS:

TxDOT Approves Preliminary  
Application- 3/27/2023

Uptown Prepares Detailed Application  
& Obtains Letters of Support

Final Application Due - 6/05/2023

TxDOT Awards TA Winners - 10/23/2023

THANK YOU

# Goal Park at Columbia Tap

Betirri Bengston  
Goal Park

# Agenda

1. Director's Report
2. Chair's Report
3. Public Comment
4. Presentation: West Loop Shared-Use Path & Bayou Bridge
5. Presentation: Desire Paths
- 6. Open Forum**
- 7. Announcements/Events**



# Open Forum

# Announcements and Events

# Announcements

## Next Meetings

- Education Subcommittee: March 22, 2:30-4:30pm
- Bicycle Advisory Committee: April 26, 2:30-4:30pm
- Infrastructure Subcommittee: May 24, 2:30-4:30pm

# Thank You



PLANNING &  
DEVELOPMENT  
DEPARTMENT

832-393-6600 | [www.houston.tx.gov/planning](http://www.houston.tx.gov/planning)