

PATTERSON STREET BIKEWAY

STAKEHOLDER MEETING

FEBRUARY 12, 2019



**PLANNING &
DEVELOPMENT
DEPARTMENT**



Agenda

- Project Overview & Purpose
- Design Concepts and Options
- Process & Timeline
- Question & Answer

Project History

- SN22 Transportation Plan (2010)
Identified Patterson as priority connection
- Washington Avenue Livable Centers Study (2013)
- Houston Bike Plan (2017)
Lists Patterson as “short-term retrofit”
- Safer Streets Initiative (2018)
Washington/Patterson intersection studied in recent Road Safety Audit



WHITE OAK trail

NICHOLSON trail

N

to MEMORIAL PARK
(future)

RUTLAND ped-bike
bridge (future)

to DOWNTOWN

PATTERSON

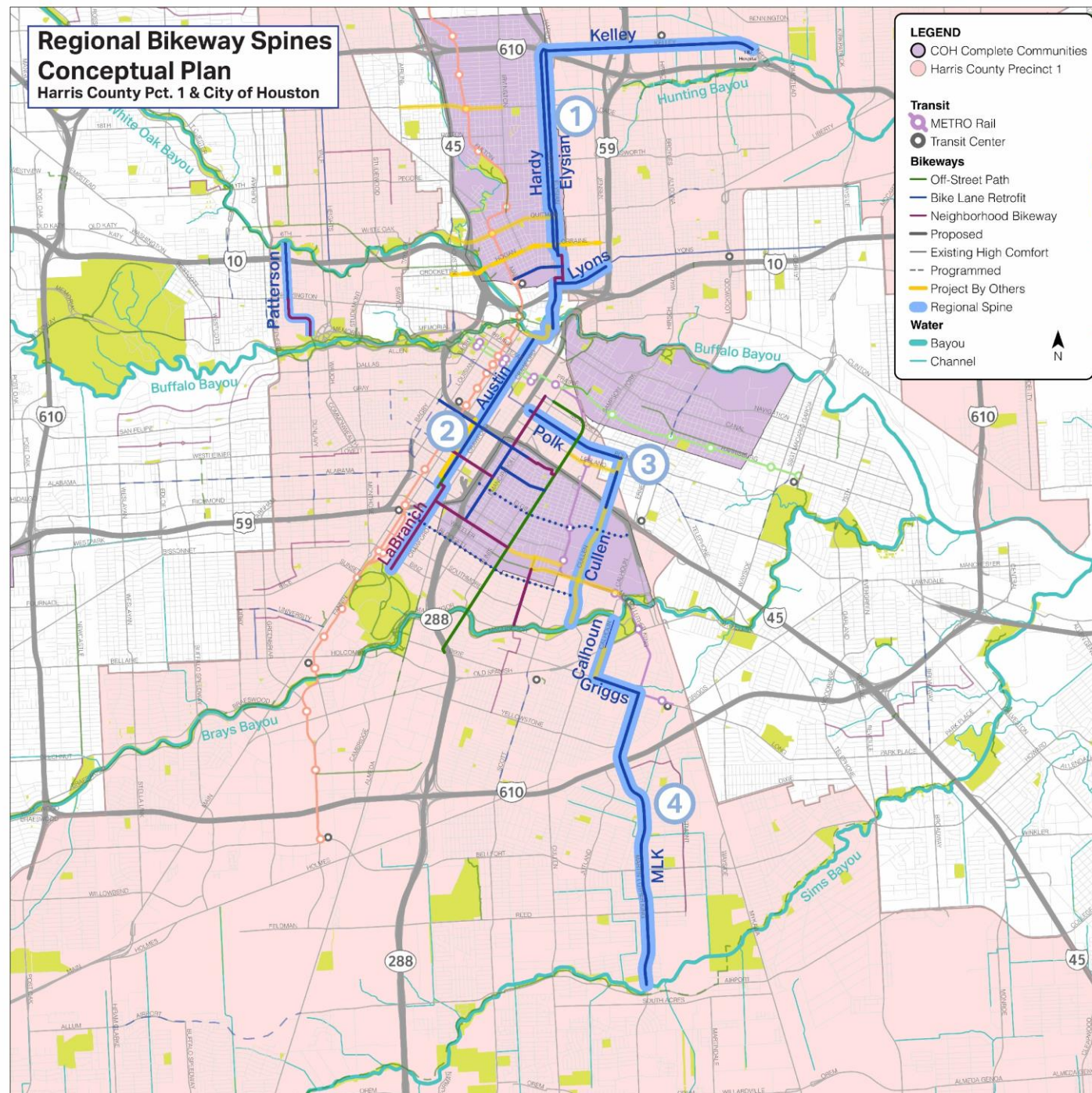
FEAGAN

JACKSON
HILL

to MEMORIAL PARK

to DOWNTOWN

Regional Bikeway Spines Conceptual Plan Harris County Pct. 1 & City of Houston



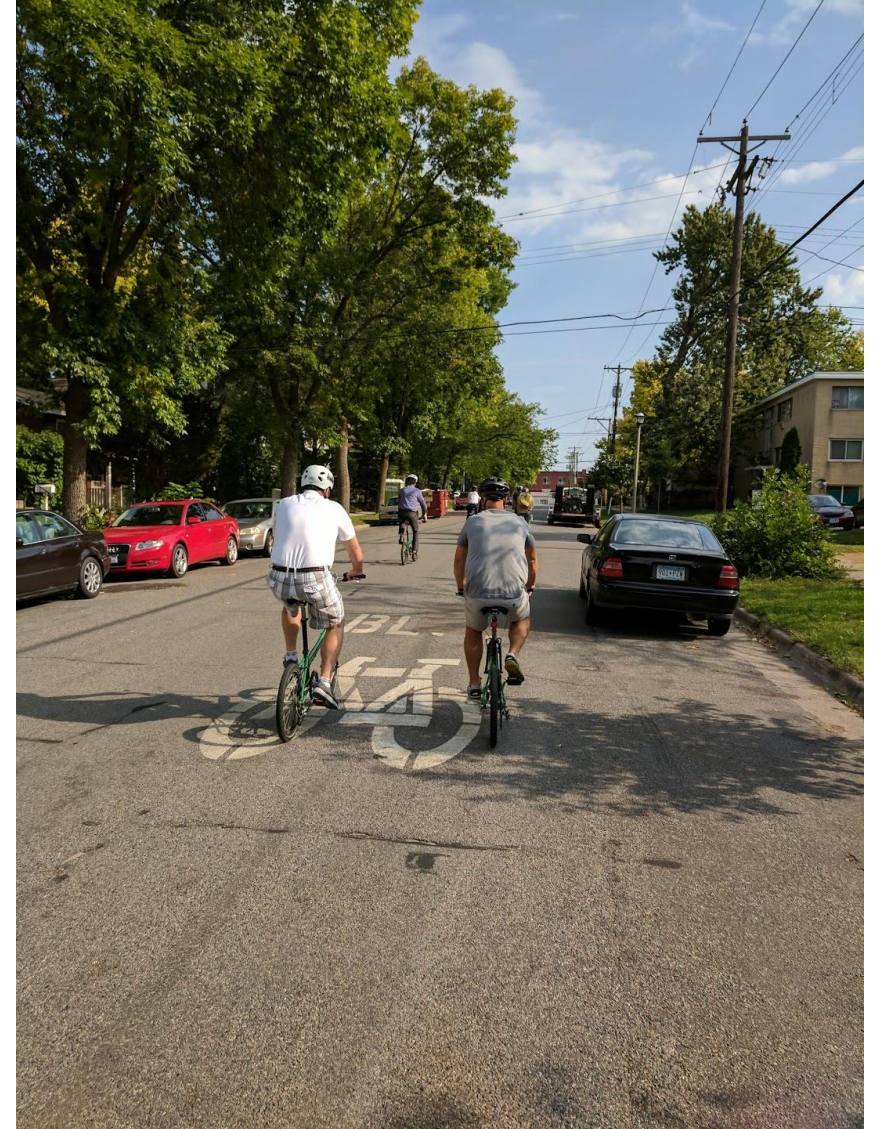
Design Concepts & Options

- Street cross-sections
- Patterson/Washington intersection
- Parking and movement impacts
- The more space yielded to pedestrians and bicyclists, the greater safety benefit

Neighborhood Bikeway



Portland, OR



Minneapolis, MN

Buffered Bike Lane



San Jose, CA



Reston, VA

**WHITE OAK BAYOU to IH-10
26' WIDE**

**IH-10 to UP RAILROAD
36' WIDE**

**UP RAILROAD TO WASHINGTON
40' WIDE**

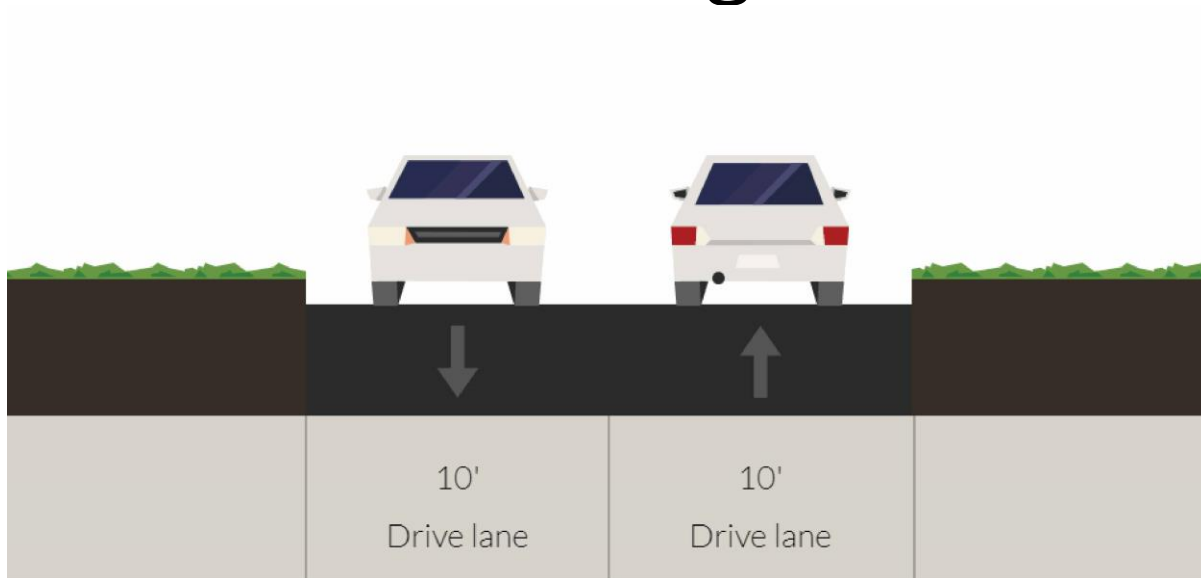
**WASHINGTON TO JACKSON HILL
18-20' WIDE**

**FEAGAN TO BUFFALO BAYOU
36' WIDE**

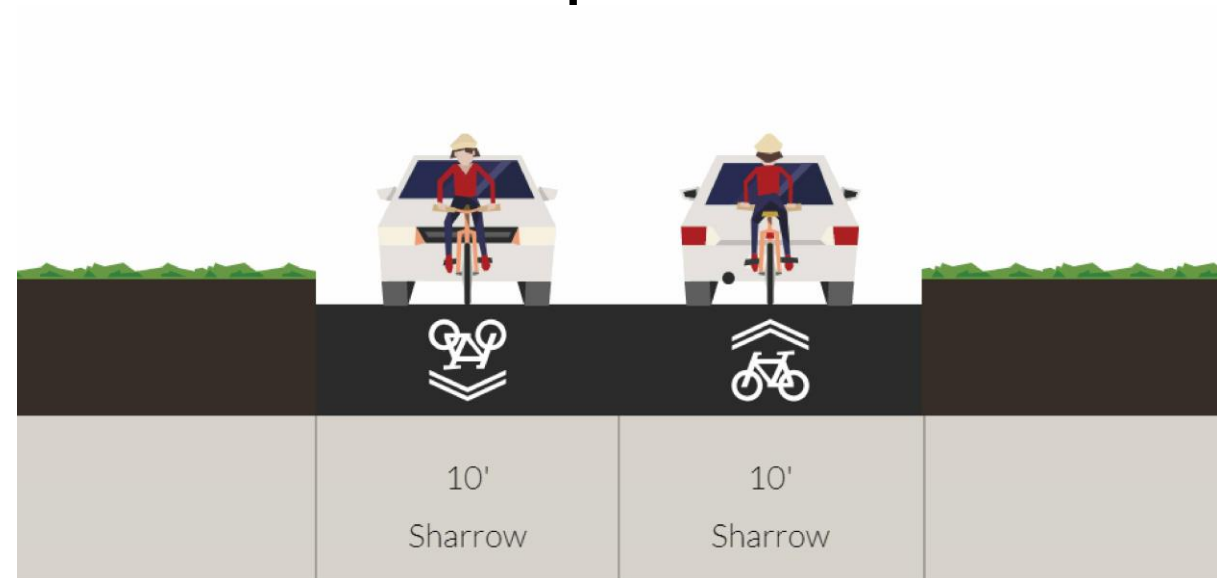
Feagan, Patterson

<36' wide

Existing



Proposed



Jackson Hill, Patterson

>36' wide

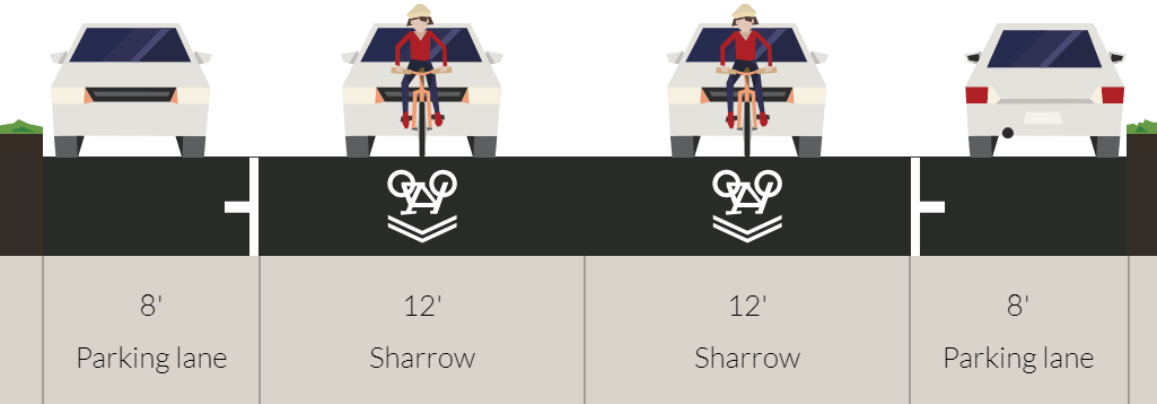
Existing



Option 1:
Buffered Bike Lane



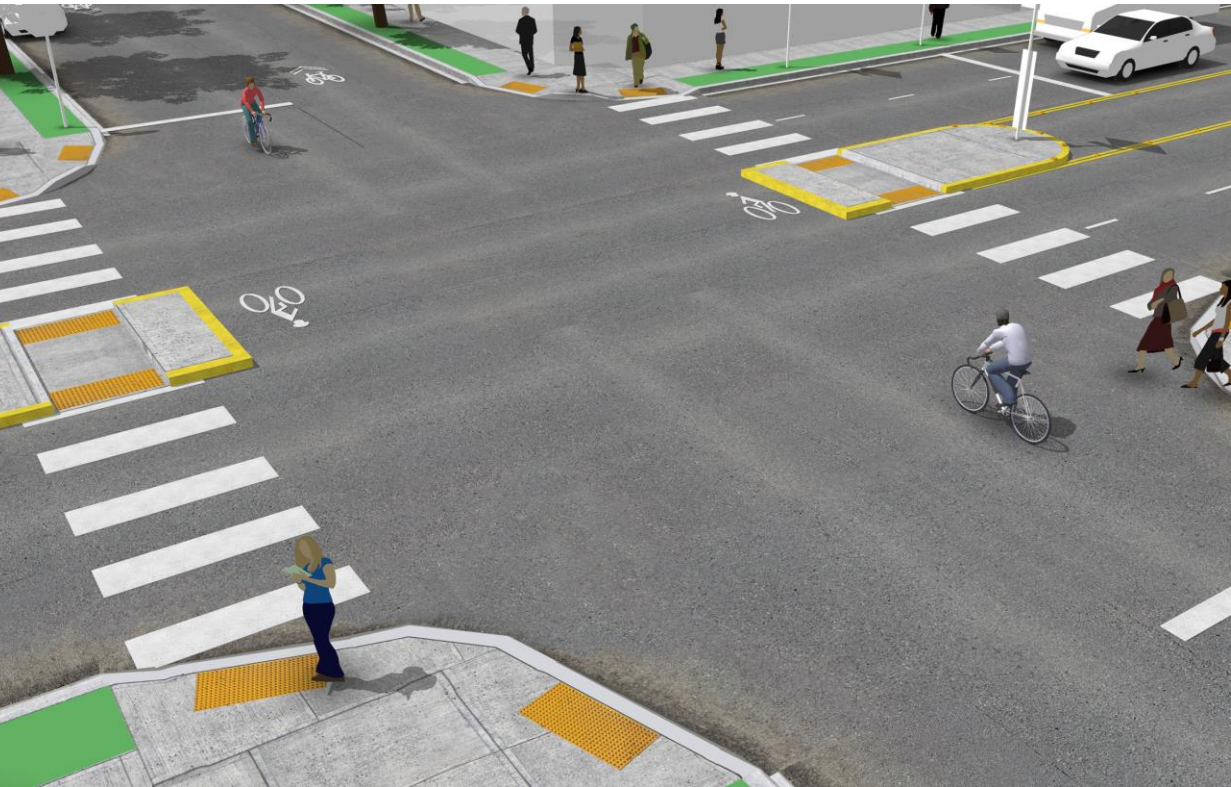
Option 2:
Shared Lane with Parking



Patterson at Washington

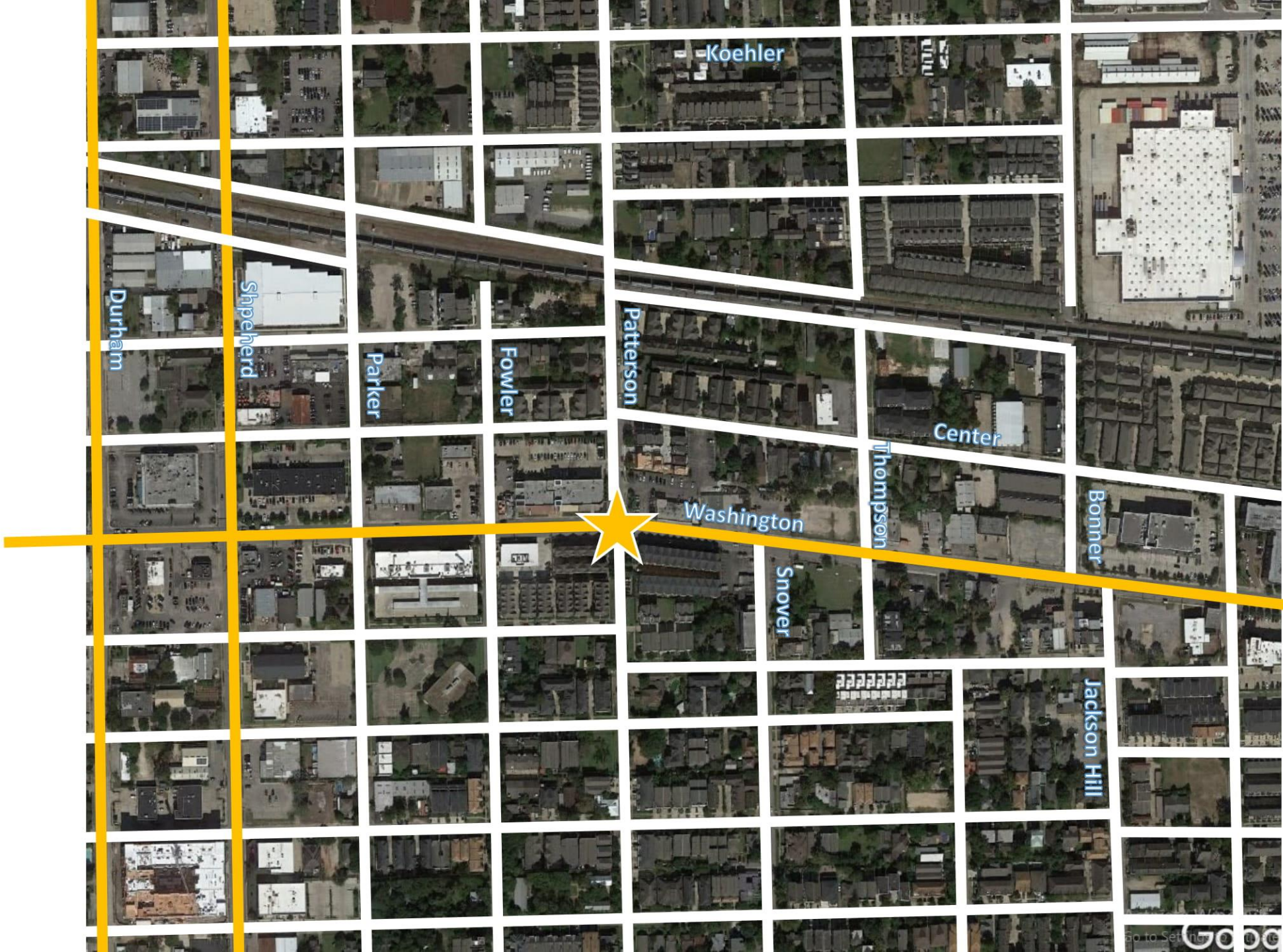
Intersection Treatment

Option 1:
Through/Left Turn Permitted



Option 2:
Full Closure





What We Heard

- Strong support for median refuge at Washington/Patterson
- Strong support for bicycle safety improvements
- Concerns around parking loss
- Concerns around speeding
- Request for stop signs at Patterson/Koehler, Jackson Hill bridge

Process and Timeline

- Stakeholder engagement (*Now*)
- Design
 - Conceptual (*Now*)
 - 50%, 90%, 100% (*Spring/Summer*)
- Follow-up
- Construction (*Spring/Summer*)